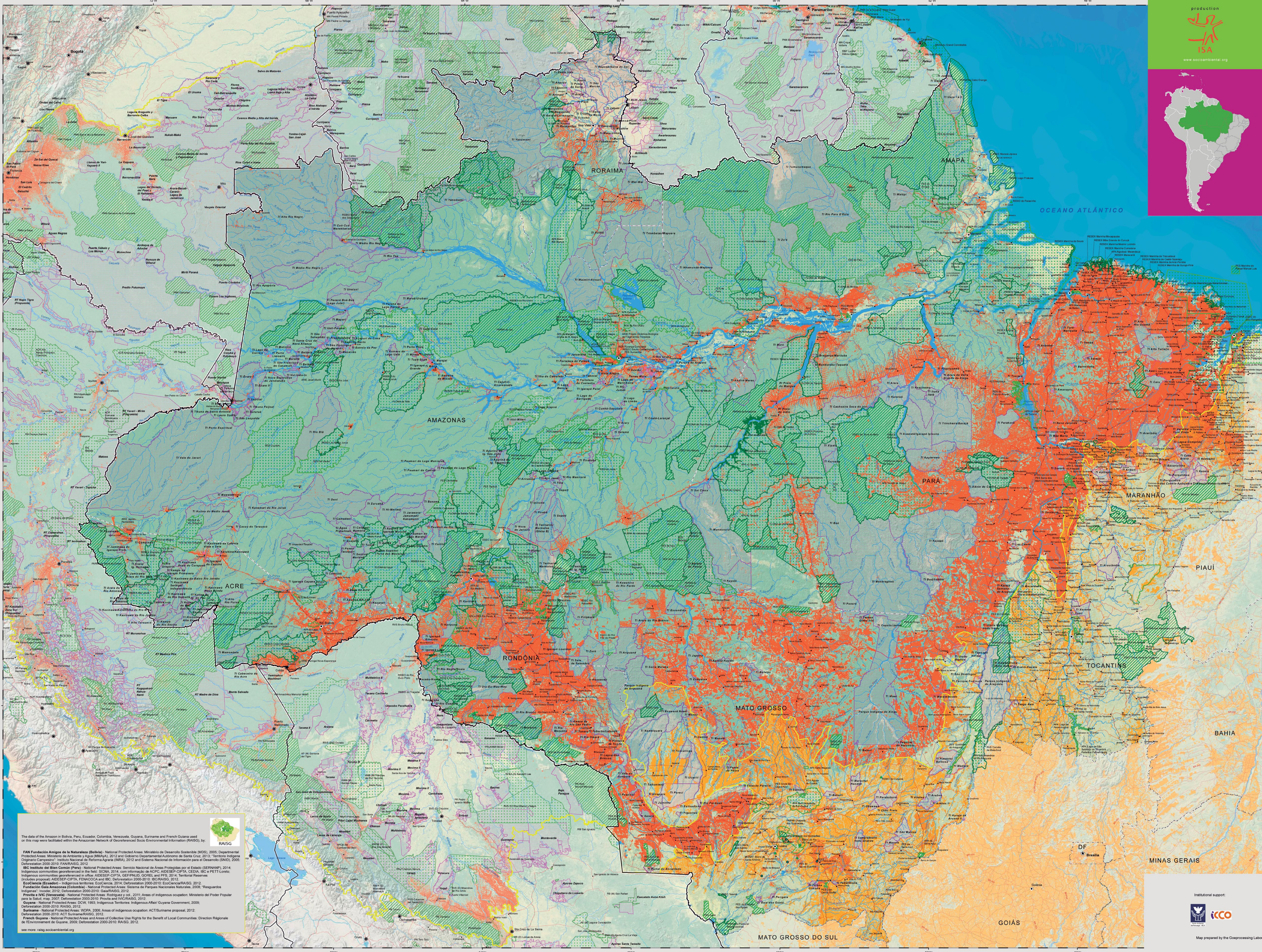




# Brazilian Amazonia 2014



**INDIGENOUS LANDS**  
source: ISA/2014

Indigenous Land

**CONSERVATION AREAS**  
by SNUC groups  
fonte: ISA/2014

Full Protection  
Sustainable Use (outside of Brazil includes mixed and transitional use)

Symbol used for an area of less than 6,000 hectares or without defined boundaries

**DEFORESTATION and ANTHROPIC AREAS**

Deforestation in the Amazon forest until 2013  
source: Prodes/INPE/2014

Anthropic areas in Cerrado biome until 2009  
source: CSIR/Brasilia  
<http://secom.brasilia.gov.br/biomas/brasil/cerrado/index.htm>

border of Amazonia biome  
source: Mapa dos Biomas, IBGE/2004 and RAISG/2012

**SYMBOLS USED**

- Federal capital
- State capital
- Municipal seat
- Other locations
- Paved road
- Unpaved road
- International border
- State boundary
- Main river network

Scale 1:4,000,000  
100 50 0 100 km

Base cartográfica: SIM/IBGE, 2010  
Bases municipais: IBGE, 2007

The data of the Amazon in Bolivia, Peru, Ecuador, Colombia, Venezuela, Guyana, Suriname and French Guiana used on this map were facilitated within the Amazonian Network of Georeferenced Socio-Environmental Information (RAISG) by:  
FAN Fundación Amigos de la Naturaleza (Bolivia) - National Protected Areas; Ministerio de Desarrollo Sostenible (MDS), 2006; Departamento Provincial de Asesoría y Apoyo (WAMBA), 2012 and Gobierno Departamental Autónomo de Santa Cruz, 2013; "Territorio Indígena Originario Campesino"; Instituto Nacional de Reforma Agraria (INRA), 2012 and Sistema Nacional de Información para el Desarrollo (SINID), 2006; Deforestación 2000-2010; RAISG/2012  
IBC Instituto del Bien Común (Peru) - National Protected Areas; Servicio Nacional de Áreas Protegidas por el Estado (SERNANP), 2014  
Indigenous communities georeferenced in the field: IBRA, 2014, con información de AICP; AIDESEP-CPTA; CEDIA; IBC; PRTT; Loro; Indígenas comunidades georeferenciadas in office: AIDESEP-CPTA; GEF/PAUD; GORE/PAUD; PPS, 2014; Territorial Reserves (Indigenous property): AIDESEP-CPTA; FIMACCA and IBC; Deforestación 2000-2010; RAISG/2012  
Ecosistemas (Ecuador) - Indigenous territories: Ecosistema 2014; Deforestación 2000-2010; RAISG/2012  
Fundación Casa Andina (Colombia) - National Protected Areas; Sistema de Parques Nacionales Naturales, 2008; Resguardos Indígenas; Incode, 2012; Deforestación 2000-2010; GEAR/RAISG, 2012  
Provincia de Iquitos (Venezuela) - National Protected Areas; Rodríguez et al., 2011; Areas of indigenous occupation; Ministerio del Poder Popular para la Salud, s.m.a., 2007; Deforestación 2000-2010; Provisas and VIC/RAISG, 2012  
Guyana - National Protected Areas; DOW, 1993; Indigenous Territories; Indigenous Affairs Guyana Government, 2009; Deforestación 2000-2010; RAISG, 2012  
Suriname - National Protected Areas; VOP, 2006; Areas of indigenous occupation; ACT/Suriname proposal, 2012; Deforestación 2000-2010; ACT/Suriname/RAISG, 2012  
French Guiana - National Protected Areas and Areas of Collective Use Rights for the Benefit of Local Communities; Direction Régionale de l'Environnement de Guyane, 2006; Deforestación 2000-2010; RAISG, 2012  
see more: raisg.socioambiental.org



Map prepared by the Geoprocessing Laboratory of the Instituto Socioambiental in October of 2014



**BRAZILIAN AMAZONIA 2014** presents a portion of the national heritage defined as Conservation Areas and Indigenous Lands, the historical outcome of the continuous and ongoing fight for the rights of indigenous peoples, for socioeconomic justice and for the conservation of biodiversity. Altogether the 420 Indigenous Lands and 315 federal and state Conservation Areas total 204.416.393 hectares, approximately 40% of Brazil's Legal Amazonia,<sup>1</sup> guaranteeing the right to the cultural reproduction and ways of life of more than 173 different indigenous peoples and diverse traditional communities. Moreover both the Indigenous Lands and the Conservation Areas contribute directly to conserving biodiversity and ecosystemic processes, to maintaining climatic conditions at micro and macro scales and to safeguarding water courses, many of which supply much of the Brazilian population living in the country's major urban centers.

The region of Brazilian Legal Amazonia is defined by Federal Law 5,173/1966 and includes the states of Acre, Amazonas, Roraima, Rondônia, Pará, Amapá, Mato Grosso, Tocantins and part of Maranhão. It consists responded to the developmentalist policy of the time, mainly implemented through the concession of tax incentives to industry and the promotion of rural settlement policies intended to occupy the region and integrate it with national networks and flows.

With an area of more than 500 million hectares and encompassing the entirety of Brazil's Amazonian biome, 37% of the Cerrado biome and 40% of the Pantanal biome, the region contains many different ecosystems and landscapes, presenting a broad diversity in terms of community structure and interactions of communities and the occurrence and abundance of species of plants, wildlife, fungi and microbiota.

Representing roughly 60% of Brazilian territory and around 775 municipalities, Legal Amazonia is home to almost 25 million inhabitants, including 433.363 indigenous peoples<sup>2</sup> and diverse traditional extractivist communities such as rubber tappers, Brazil nut harvesters, artisanal fishing communities and babassu coconut harvesters, among other groups.

The Indigenous Lands (ILs) and Conservation Areas (CAs) in Brazilian Amazonia face many challenges: the expansion of farming, mining, illegal logging and the major infrastructural works promoted by government projects, such as roads and hydroelectric plants, which have been converting the natural landscapes and have already felled more than 22% of the Amazon rainforest (75.879.376 ha) with the pace continuing and increasing.

### Deforestation in Amazonia

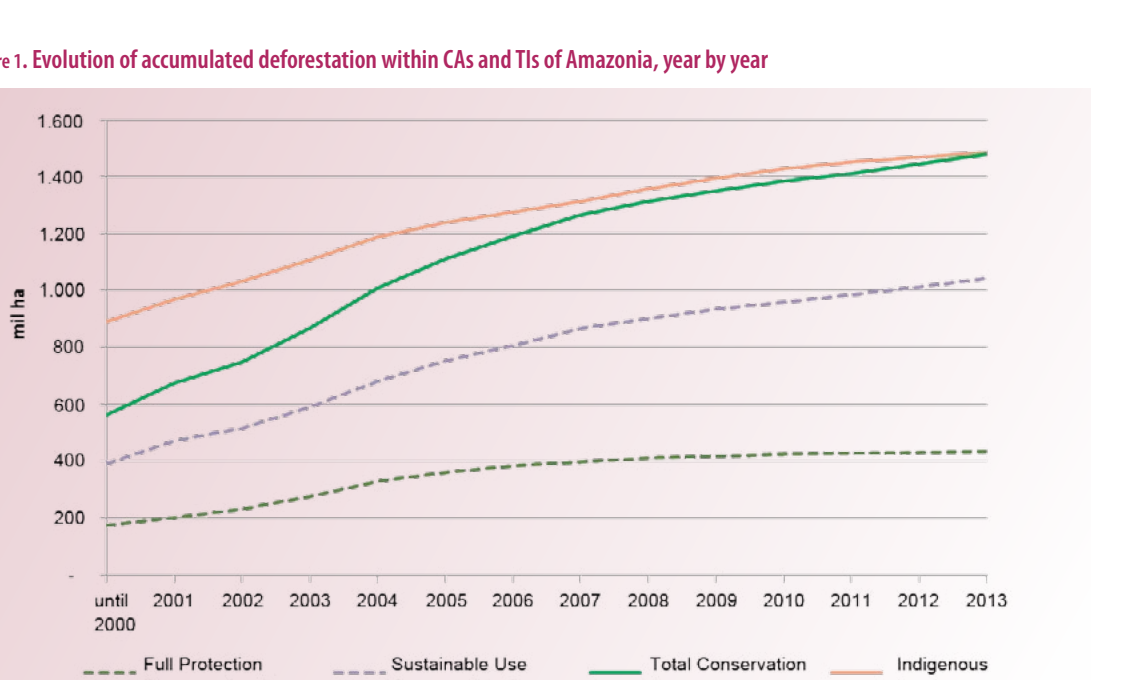
According to data from the National Institute for Space Research (PDS: Brazilian Amazon Rainforest Monitoring Program (INPE)<sup>3</sup> analyzed in relation to the limits of the CAs and ILs produced by ISA, 148.345.913 hectares<sup>4</sup> of these units correspond originally to forests, which represents 72,5% of the total area of the 270 CAs and 420 ILs in Brazilian Amazonia. The ILs and CAs present accumulated total deforested area of 2.965.473 ha, that is 2% of the forest originally existing within them. Of this total, 1.480.262 ha were deforested in the CAs (163.203 ha in full Protection CAs and 1.043.999 ha in sustainable use CAs) and 1.485.211 ha in the ILs (141; Figure 1).

The accumulated deforestation within CAs and ILs represents 3,9% of the total area of Brazilian Amazonia, while the remaining 96,1% occurred in private properties and public lands outside the CAs and ILs. This reveals the later fundamental elements in any strategy for containing deforestation in Amazonia and enabling a just regional development model that includes the different modes of life and territorial appropriation, an alternative to the predatory development model.

In Figure 2, which shows annual deforestation rates in Brazilian Amazonia outside the protected areas and within Indigenous Lands and Conservation Areas, all patterns appear as very clear ones.

An evaluation of the proportion of deforested area within the Protected Areas shows that the federal full protection conservation areas, followed by the state CAs and then the ILs, are showing the least amount of deforestation within their borders. The federal sustainable use CAs show the most (Table 1). Nevertheless, the differences are even more striking in reality: if we take into account the year that the CAs were created rather than calculate the deforestation in the area in historical terms – that is, if we calculate only the deforestation following their delimitation – then we find that less than 62% of the deforestation observed inside their boundaries occurred after their creation.

	Analyzed forest area (ha)	Accumulated total deforested area, 2000 (ha)	Accumulated total deforested area, 2013 (ha)	Accumulated total deforested area, 2011 (%)
Federal CAs	18.411.136	370.997	984.004	2,36
Full Protection	21.043.147	107.454	308.348	1,47
Sustainable Use	27.242.089	263.663	675.656	3,01
State CAs	27.929.519	396.588	976.796	3,46
Full Protection	7.790.519	66.388	127.855	1,67
Sustainable Use	20.226.991	329.990	748.941	3,72
Conservation Areas	68.984.297	584.869	1.383.291	2,01
ILs	76.929.227	892.274	7.453.294	9,71
Outside the ILs and CAs	188.600.355	50.101.614	1.128.921.904	39,39



**Figure 2. Annual deforestation in Brazilian Amazonia inside and outside the Indigenous Lands and Conservation Areas, in percentages\***

Year	Outside CAs and ILs (%)	Inside CAs and ILs (%)
2001	2,9	0,1
2002	1,3	0,1
2003	1,1	0,1
2004	1,6	0,2
2005	1,7	0,2
2006	1,2	0,1
2007	0,7	0,1
2008	0,7	0,1
2009	0,7	0,1
2010	0,6	0,0
2011	0,3	0,0
2012	0,2	0,0
2013	0,3	0,0

Category	Official Area (ha)	Analyzed Area (ha)	% of Area in relation to Total Area of CA/IL	% of Area in relation to Total Area of Brazilian Amazonia
<b>Federal</b>	<b>136</b>	<b>62.726.818</b>	<b>61.779.148</b>	<b>51,79%</b>
<b>Full Protection – FP</b>	<b>49</b>	<b>32.678.810</b>	<b>32.487.992</b>	<b>27,2%</b>
<b>ESUC</b>	<b>15</b>	<b>7.062.350</b>	<b>7.066.866</b>	<b>5,83%</b>
<b>PAIBA</b>	<b>9</b>	<b>21.901.530</b>	<b>21.723.140</b>	<b>18,21%</b>
<b>RESCIS</b>	<b>9</b>	<b>3.378.021</b>	<b>3.657.240</b>	<b>3,00%</b>
<b>RESEC</b>	<b>1</b>	<b>1.009</b>	<b>1.009</b>	<b>0,00%</b>
<b>Sustainable Use – SU</b>	<b>87</b>	<b>30.186.008</b>	<b>29.291.656</b>	<b>24,56%</b>
<b>APA</b>	<b>4</b>	<b>2.435.633</b>	<b>2.338.317</b>	<b>1,96%</b>
<b>ARIE</b>	<b>3</b>	<b>30.864</b>	<b>18.842</b>	<b>0,02%</b>
<b>FLONA</b>	<b>32</b>	<b>15.761.707</b>	<b>15.074.730</b>	<b>12,64%</b>
<b>RESERVA</b>	<b>1</b>	<b>1.986.222</b>	<b>1.986.222</b>	<b>0,01%</b>
<b>State</b>	<b>47</b>	<b>11.945.007</b>	<b>11.795.257</b>	<b>9,98%</b>
<b>RESEX</b>	<b>179</b>	<b>62.035.273</b>	<b>62.035.273</b>	<b>48,21%</b>
<b>Full Protection – FP</b>	<b>62</b>	<b>13.151.336</b>	<b>12.931.138</b>	<b>10,84%</b>
<b>ESUC</b>	<b>9</b>	<b>6.428.315</b>	<b>6.405.718</b>	<b>3,86%</b>
<b>PAIBA</b>	<b>2</b>	<b>22.410</b>	<b>29.779</b>	<b>0,02%</b>
<b>RESCIS</b>	<b>411</b>	<b>7.028.294</b>	<b>7.820.817</b>	<b>6,39%</b>
<b>RESEC</b>	<b>6</b>	<b>1.261.650</b>	<b>1.239.386</b>	<b>1,04%</b>
<b>Sustainable Use – SU</b>	<b>87</b>	<b>30.186.008</b>	<b>29.291.656</b>	<b>24,56%</b>
<b>APA</b>	<b>4</b>	<b>2.435.633</b>	<b>2.338.317</b>	<b>1,96%</b>
<b>ARIE</b>	<b>3</b>	<b>30.864</b>	<b>18.842</b>	<b>0,02%</b>
<b>FLONA</b>	<b>32</b>	<b>15.761.707</b>	<b>15.074.730</b>	<b>12,64%</b>
<b>RESERVA</b>	<b>1</b>	<b>1.986.222</b>	<b>1.986.222</b>	<b>0,01%</b>
<b>State</b>	<b>47</b>	<b>11.945.007</b>	<b>11.795.257</b>	<b>9,98%</b>
<b>RESEX</b>	<b>179</b>	<b>62.035.273</b>	<b>62.035.273</b>	<b>48,21%</b>
<b>Full Protection – FP</b>	<b>62</b>	<b>13.151.336</b>	<b>12.931.138</b>	<b>10,84%</b>
<b>ESUC</b>	<b>9</b>	<b>6.428.315</b>	<b>6.405.718</b>	<b>3,86%</b>
<b>PAIBA</b>	<b>2</b>	<b>22.410</b>	<b>29.779</b>	<b>0,02%</b>
<b>RESCIS</b>	<b>411</b>	<b>7.028.294</b>	<b>7.820.817</b>	<b>6,39%</b>
<b>RESEC</b>	<b>6</b>	<b>1.261.650</b>	<b>1.239.386</b>	<b>1,04%</b>
<b>Sustainable Use – SU</b>	<b>87</b>	<b>30.186.008</b>	<b>29.291.656</b>	<b>24,56%</b>
<b>APA</b>	<b>4</b>	<b>2.435.633</b>	<b>2.338.317</b>	<b>1,96%</b>
<b>ARIE</b>	<b>3</b>	<b>30.864</b>	<b>18.842</b>	<b>0,02%</b>
<b>FLONA</b>	<b>32</b>	<b>15.761.707</b>	<b>15.074.730</b>	<b>12,64%</b>
<b>RESERVA</b>	<b>1</b>	<b>1.986.222</b>	<b>1.986.222</b>	<b>0,01%</b>
<b>State</b>	<b>47</b>	<b>11.945.007</b>	<b>11.795.257</b>	<b>9,98%</b>
<b>RESEX</b>	<b>179</b>	<b>62.035.273</b>	<b>62.035.273</b>	<b>48,21%</b>
<b>Full Protection – FP</b>	<b>62</b>	<b>13.151.336</b>	<b>12.931.138</b>	<b>10,84%</b>
<b>ESUC</b>	<b>9</b>	<b>6.428.315</b>	<b>6.405.718</b>	<b>3,86%</b>
<b>PAIBA</b>	<b>2</b>	<b>22.410</b>	<b>29.779</b>	<b>0,02%</b>
<b>RESCIS</b>	<b>411</b>	<b>7.028.294</b>	<b>7.820.817</b>	<b>6,39%</b>
<b>RESEC</b>	<b>6</b>	<b>1.261.650</b>	<b>1.239.386</b>	<b>1,04%</b>
<b>Sustainable Use – SU</b>	<b>87</b>	<b>30.186.008</b>	<b>29.291.656</b>	<b>24,56%</b>
<b>APA</b>	<b>4</b>	<b>2.435.633</b>	<b>2.338.317</b>	<b>1,96%</b>
<b>ARIE</b>	<b>3</b>	<b>30.864</b>	<b>18.842</b>	<b>0,02%</b>
<b>FLONA</b>	<b>32</b>	<b>15.761.707</b>	<b>15.074.730</b>	<b>12,64%</b>
<b>RESERVA</b>	<b>1</b>	<b>1.986.222</b>	<b>1.986.222</b>	<b>0,01%</b>
<b>State</b>	<b>47</b>	<b>11.945.007</b>	<b>11.795.257</b>	<b>9,98%</b>
<b>RESEX</b>	<b>179</b>	<b>62.035.273</b>	<b>62.035.273</b>	<b>48,21%</b>
<b>Full Protection – FP</b>	<b>62</b>	<b>13.151.336</b>	<b>12.931.138</b>	<b>10,84%</b>
<b>ESUC</b>	<b>9</b>	<b>6.428.315</b>	<b>6.405.718</b>	<b>3,86%</b>
<b>PAIBA</b>	<b>2</b>	<b>22.410</b>	<b>29.779</b>	<b>0,02%</b>
<b>RESCIS</b>	<b>411</b>	<b>7.028.294</b>	<b>7.820.817</b>	<b>6,39%</b>
<b>RESEC</b>	<b>6</b>	<b>1.261.650</b>	<b>1.239.386</b>	<b>1,04%</b>
<b>Sustainable Use – SU</b>	<b>87</b>	<b>30.186.008</b>	<b>29.291.656</b>	<b>24,56%</b>
<b>APA</b>	<b>4</b>	<b>2.435.633</b>	<b>2.338.317</b>	<b>1,96%</b>
<b>ARIE</b>	<b>3</b>	<b>30.864</b>	<b>18.842</b>	<b>0,02%</b>
<b>FLONA</b>	<b>32</b>	<b>15.761.707</b>	<b>15.074.730</b>	<b>12,64%</b>
<b>RESERVA</b>	<b>1</b>	<b>1.986.222</b>	<b>1.986.222</b>	<b>0,01%</b>
<b>State</b>	<b>47</b>	<b>11.945.007</b>	<b>11.795.257</b>	<b>9,98%</b>
<b>RESEX</b>	<b>179</b>	<b>62.035.273</b>	<b>62.035.273</b>	<b>48,21%</b>
<b>Full Protection – FP</b>	<b>62</b>	<b>13.151.336</b>	<b>12.931.138</b>	<b>10,84%</b>
<b>ESUC</b>	<b>9</b>	<b>6.428.315</b>	<b>6.405.718</b>	<b>3,86%</b>
<b>PAIBA</b>	<b>2</b>	<b>22.410</b>	<b>29.779</b>	<b>0,02%</b>
<b>RESCIS</b>	<b>411</b>	<b>7.028.294</b>	<b>7.820.817</b>	<b>6,39%</b>
<b>RESEC</b>	<b>6</b>	<b>1.261.650</b>	<b>1.239.386</b>	<b>1,04%</b>
<b>Sustainable Use – SU</b>	<b>87</b>	<b>30.186.008</b>	<b>29.291.656</b>	<b>24,56%</b>
<b>APA</b>	<b>4</b>	<b>2.435.633</b>	<b>2.338.317</b>	<b>1,96%</b>
<b>ARIE</b>	<b>3</b>	<b>30.864</b>	<b>18.842</b>	<b>0,02%</b>
<b>FLONA</b>	<b>32</b>	<b>15.761.707</b>	<b>15.074.730</b>	<b>12,64%</b>
<b>RESERVA</b>	<b>1</b>	<b>1.986.222</b>	<b>1.986.222</b>	<b>0,01%</b>
<b>State</b>	<b>47</b>	<b>11.945.007</b>	<b>11.795.257</b>	<b>9,98%</b>
<b>RESEX</b>	<b>179</b>	<b>62.035.273</b>	<b>62.035.273</b>	<b>48,21%</b>
<b>Full Protection – FP</b>	<b>62</b>	<b>13.151.336</b>	<b>12.931.138</b>	<b>10,84%</b>
<b>ESUC</b>	<b>9</b>	<b>6.428.315</b>	<b>6.405.718</b>	<b>3,86%</b>
<b>PAIBA</b>	<b>2</b>	<b>22.410</b>	<b>29.779</b>	<b>0,02%</b>
<b>RESCIS</b>	<b>411</b>	<b>7.028.294</b>	<b>7.820.817</b>	<b>6,39%</b>
<b>RESEC</b>	<b>6</b>	<b>1.261.650</b>	<b>1.239.386</b>	<b>1,04%</b>
<b>Sustainable Use – SU</b>	<b>87</b>	<b>30.186.008</b>	<b>29.291.656</b>	<b>24,56%</b>
<b>APA</b>	<b>4</b>	<b>2.435.633</b>	<b>2.338.317</b>	<b>1,96%</b>
<b>ARIE</b>	<b>3</b>	<b>30.864</b>	<b>18.842</b>	<b>0,02%</b>
<b>FLONA</b>	<b>32</b>	<b>15.761.707</b>	<b>15.074.730</b>	<b>12,64%</b>
<b>RESERVA</b>	<b>1</b>	<b>1.986.222</b>	<b>1.986.222</b>	<b>0,01%</b>
<b>State</b>	<b>47</b>	<b>11.945.007</b>	<b>11.795.257</b>	<b>9,98%</b>
<b>RESEX</b>	<b>179</b>	<b>62.035.273</b>	<b>62.035.273</b>	<b>48,21%</b>
<b>Full Protection – FP</b>	<b>62</b>	<b>13.151.336</b>	<b>12.931.138</b>	<b>10,84%</b>
<b>ESUC</b>	<b>9</b>	<b>6.428.315</b>	<b>6.405.718</b>	<b>3,86%</b>
<b>PAIBA</b>	<b>2</b>	<b>22.410</b>	<b>29.779</b>	<b>0,02%</b>
<b>RESCIS</b>	<b>411</b>	<b>7.028.294</b>	<b>7.820.817</b>	<b>6,39%</b>
<b>RESEC</b>	<b>6</b>	<b>1.261.650</b>	<b>1.239.386</b>	<b>1,04%</b>
<b>Sustainable Use – SU</b>	<b>87</b>	<b>30.186.008</b>	<b>29.291.656</b>	<b>24,56%</b>
<b>APA</b>	<b>4</b>	<b>2.435.633</b>	<b>2.338.317</b>	<b>1,96%</b>
<b>ARIE</b>	<b>3</b>	<b>30.864</b>	<b>18.842</b>	<b>0,02%</b>
<b>FLONA</b>	<b>32</b>	<b>15.761.707</b>	<b>15.074.730</b>	<b>12,64%</b>
<b>RESERVA</b>	<b>1</b>	<b>1.986.222</b>	<b>1.986.222</b>	<b>0,01%</b>
<b>State</b>	<b>47</b>	<b>11.945.007</b>	<b>11.795.257</b>	<b>9,98%</b>
<b>RESEX</b>	<b>179</b>	<b>62.035.273</b>	<b>62.035.273</b>	<b>48,21%</b>
<b>Full Protection – FP</b>	<b>62</b>	<b>13.151.336</b>	<b>12.931.138</b>	<b>10,84%</b>
<b>ESUC</b>	<b>9</b>	<b>6.428.315</b>	<b>6.405.718</b>	<b>3,86%</b>
<b>PAIBA</b>	<b>2</b>	<b>22.410</b>	<b>29.779</b>	<b>0,02%</b>
<b>RESCIS</b>	<b>411</b>	<b>7.028.294</b>	<b>7.820.817</b>	<b>6,39%</b>
<b>RESEC</b>	<b>6</b>	<b>1.261.650</b>	<b>1.239.386</b>	<b>1,04%</b>
<b>Sustainable Use – SU</b>	<b>87</b>	<b>30.186.008</b>	<b>29.291.656</b>	<b>24,56%</b>
<b>APA</b>	<b>4</b>	<b>2.435.633</b>	<b>2.338.317</b>	<b>1,96%</b>
<b>ARIE</b>	<b>3</b>	<b>30.864</b>	<b>18.842</b>	<b>0,02%</b>
<b>FLONA</b>	<b>32</b>	<b>15.761.707</b>	<b>15.074.730</b>	<b>12,64%</b>
<b>RESERVA</b>	<b>1</b>	<b>1.986.222</b>	<b>1.986.222</b>	<b>0,01%</b>
<b>State</b>	<b>47</b>	<b>11.945.007</b>	<b>11.795.257</b>	<b>9,98%</b>
<b>RESEX</b>	<b>179</b>	<b>62.035.273</b>	<b>62.035.273</b>	<b>48,21%</b>
<b>Full Protection – FP</b>	<b>62</b>	<b>13.151.336</b>	<b>12.931.138</b>	<b>10,84%</b>
<b>ESUC</b>	<b>9</b>	<b>6.428.315</b>	<b>6.405.718</b>	<b>3,86%</b>
<b>PAIBA</b>	<b>2</b>	<b>22.410</b>	<b>29.779</b>	<b>0,02%</b>
<b>RESCIS</b>	<b>411</b>	<b>7.028.294</b>	<b>7.820.817</b>	<b>6,39%</b>
<b>RESEC</b>	<b>6</b>	<b>1.261.650</b>	<b>1.239.386</b>	<b>1,04%</b>
<b>Sustainable Use – SU</b>	<b>87</b>	<b>30.186.008</b>	<b>29.291.656</b>	<b>24,56%</b>
<b>APA</b>	<b>4</b>	<b>2.435.633</b>	<b>2.338.317</b>	<b>1,96%</b>
<b>ARIE</b>	<b>3</b>	<b>30.864</b>	<b>18.842</b>	<b>0,02%</b>
<b>FLONA</b>	<b>32</b>	<b>15.761.707</b>	<b>15.074.730</b>	<b>12,64%</b>
<b>RESERVA</b>	<b>1</b>	<b>1.986.222</b>	<b>1.986.222</b>	<b>0,01%</b>
<b>State</b>	<b>47</b>	<b>11.945.007</b>	<b>11.795.257</b>	<b>9,98%</b>
<b>RESEX</b>	<b>179</b>	<b>62.035.273</b>	<b>62.035.273</b>	<b>48,21%</b>
<b>Full Protection – FP</b>	<b>62</b>	<b>13.151.336</b>	<b>12.931.138</b>	<b>10,84%</b>
<b>ESUC</b>	<b>9</b>	<b>6.428.315</b>	<b>6.405.718</b>	<b>3,86%</b>
<b>PAIBA</b>				